



Soddy-Daisy TENNESSEE

Soddy-Daisy, Tennessee Demographic Snapshot

	5 Mile Radius Ring*	20 Minute Drive Time*	Soddy-Daisy	Hamilton County
2011 Estimated Population	36,194	102,744	12,714	338,373
Est. Median Household Income	\$55,578	\$53,532	\$47,216	\$51,092
Total Number of Employees	4,474	35,636	1,700	185,046

* Radius Ring and Drive Time Demographics are based from Dayton Pike & Harrison Lane

Located North Hamilton County along US Highway 27, Soddy-Daisy is one of the fastest growing suburbs of Chattanooga. In the past decade, Soddy-Daisy has grown from a bedroom community to a small suburban city with an abundance of amenities.

Education & Recreation

Education

Soddy-Daisy is home to an award-winning school system maintained by the Hamilton County Board of Education. Nearly 4,000 students attend three elementary schools, one middle school & two high schools in Soddy-Daisy.

Recreation

Soddy Lake provides fishing, marinas, boat ramps, swimming and skiing. In addition, there are camping and picnic areas along the shoreline.

In addition to the lake, five parks in Soddy-Daisy provide:

- 10 Baseball Fields
- 3 Playgrounds
- 2 Tennis Courts
- 2 Basketball Courts

There is a fishing pier, boat ramp, community center, park shelters and a dog park.

Quick Facts

- According to the 2010 US Census there were 5,507 housing units in Soddy-Daisy, of which 7.35% are owner-occupied.
- Approximately 82.7% of Soddy-Daisy's residents 25 and older are high school graduates.
- There are approximately 5,221 households in Soddy-Daisy with an average of 2.37 persons per household.

Tax & Business

Business

- Soddy-Daisy consistently ranks as one of Tennessee's 'Most Business-Friendly Cities'. It ranked #15 in 2011.
- Just five miles east of downtown Soddy-Daisy lies the site of the proposed Tennessee River Bridge that would link the communities of Soddy-Daisy and Harrison. This bridge would serve to connect Route 111, Route 58, US Highway 27 and Interstate 75.
- Over 2,000 direct and 9,500 indirect/supplier jobs are being created in the area by the new Volkswagen Automotive Production Facility in Chattanooga.

Traffic

30,725	US Highway 27 at Harrison Lane
29,083	US Highway 27 at Sequoyah Road
10,560	Sequoyah Road and Walden Street

Taxes

2.25%	Soddy-Daisy Local Sales Tax Rate
5.5%	State Collection on Groceries
7.0%	State Collection on Other Items
\$1.00	Soddy-Daisy Property Tax (per \$100)
\$2.7652	Hamilton Co. Property Tax (per \$100)



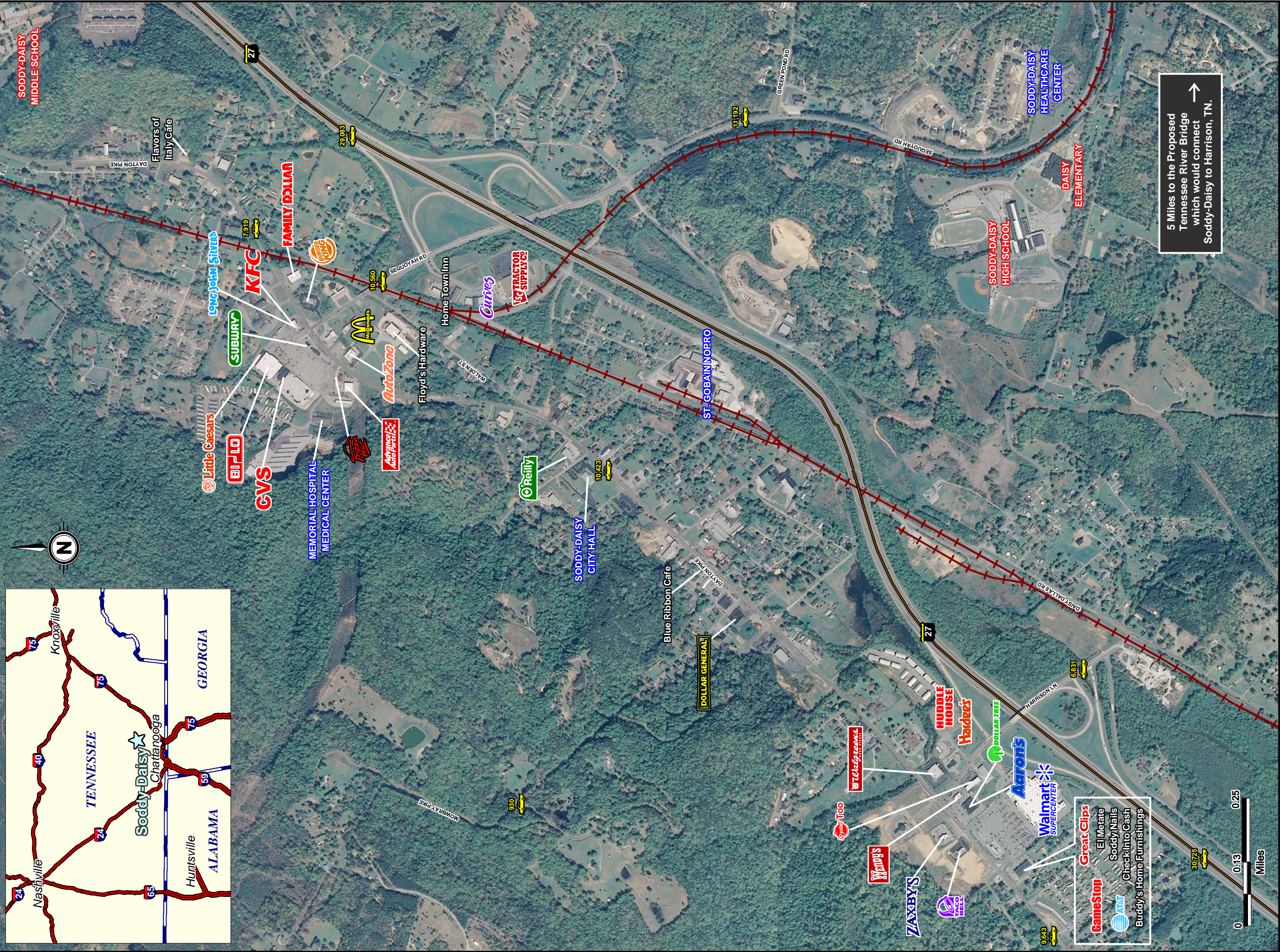
From Dayton Pike & Harrison Lane to:

Hixson, TN (Northgate Mall)	9.3 miles
Chattanooga, TN (Hamilton Place Mall)	18 miles
Dayton, TN	22 miles
Cleveland, TN	42 miles
Kimball, TN	45 miles

For more information contact:

Soddy-Daisy City Hall
9835 Dayton Pike, Soddy-Daisy, Tennessee 37379
(423) 332-5323
shopsd@soddy-daisy.org | www.soddy-daisy.org





©2012, The Shopping Center Group, Nashville, TN (615) 259-0200. All Rights Reserved.

Soddy-Daisy, North Hamilton County, Tennessee

Prepared for:



CHATTANOOGA
AREA CHAMBER OF COMMERCE
North Hamilton County Council

Prepared by:



DEMOGRAPHIC SNAPSHOT

STANDARD DEMOGRAPHICS	5 Mile Radius Ring*	10 Minute Drive Time*
2011 Estimated Population	36,194	33,742
Projected Annual Growth '11-'16	0.6%	0.5%
'11 Est. Median Household Income	\$55,578	\$52,936

Within Soddy-Daisy...
6 Public Schools with 3,979 Students
Within a 10 Minute Drive Time...
449 Businesses
4,900 Employees

* Radius Rings & Drive Times based from the Walmart at Dayton Pike & Harrison Lane.

LEGEND



2011 Tennessee DOT Vehicles Per Day

2010 USDA Aerial

2012